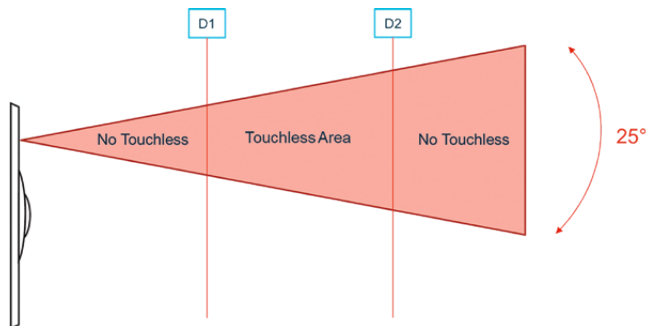


Features of the touchless function

- Easy handling: sensor activation by intuitive hand movement in the direction of the tactile touch surface
- Sensor detects wiping movements during cleaning processes: Activation only with intentional operation
- Optimal coverage of the interaction area: Due to the pointed cone shape of the activation area, no adjacent buttons are triggered



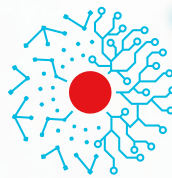
CK Touchless Panel for lavatories



Activation range of the touchless function
D1 = typ. 30 mm, D2 = typ. 80 mm

Technical details

Nominal voltage	24 VDC
Nominal current	Depending on the version up to 50 mA @ 24 VDC
Switching current	200 mA ohmic load
Switching function	Normally open (No), PNP, NPN
Operating temperature	-25 ... +70 °C
Degree of protection	IP67 front and back side
Luminous colors	Red, green, yellow
Sound	Orientation, confirmation or warning tones



MAFELEC TEAM

CREATING SMART AND
SUSTAINABLE INTERFACES



MAFELEC
471, Route de la Cuisinière | 38490 Chimilin | France
T +33 4 763 207 33 | contact@mafelec.com
www.mafelec.com



TSL-ESCHA GmbH
Elberfelder Straße 1 | 58553 Halver | Germany
T +49 2353 66796-0 | info@tsl-escha.com
www.tsl-escha.com



CK TOUCHLESS

TOUCHLESS AND TACTILE
ACTIVATION

We reserve the right to make technical changes. The Flyer is not subject to change management.

1000369_01_03-2024-EN, Printed in Germany

First TSL-ESCHA hybrid push button

TSL-ESCHA looks back on 35 years of experience in the development and production of push buttons. The focus is on the continuous development of products in order to realize holistic solutions to meet individual customer requirements. With the integration of touchless technology, TSL-ESCHA is expanding its successful Combikey (CK) push button series and offers a product variation which additionally enables touchless activation of the push button.

The CK Touchless was designed for applications in rail vehicles and buses and can also be easily integrated into existing vehicles thanks to its simple installation. It offers a wide range of customized applications and is particularly suitable for use in lavatories and other areas where hygiene and cleanliness cannot be guaranteed on a permanent basis. The use of touchless technology also improves passenger comfort and increases personal well-being when using public transportation.

Since November 2021, TSL-ESCHA has been part of the MAFELEC TEAM, an owner-managed French group. The CK Touchless is the first joint project between TSL-ESCHA and MAFELEC.



The new CK Touchless push button enables touchless operation through the integrated sensor above the tactile touch surface.

Highlights and customer benefits

- The push button can be operated touchlessly or tactilely depending on the situation
- Easy cleaning due to the flat design and the stainless steel front bezel
- Sensor technology: Increasing passenger comfort when operating public push buttons
- Customizable: wide range and combination possibilities of colors and pictograms
- Pictogram permanently protected behind transparent touch surface cover
- Coating resistant to graffiti remover for touch surface (optional)
- Wide range of customized applications e.g. in lavatories or entry areas
- Easy mounting
- Robust housing technology, high degree of protection, durable
- Barrier-free and user-oriented operation for people with reduced mobility
- Complies with the current standards for rail vehicles (TSI-PRM, EN 14752, EN 50155, EN 45545-2 und EN 61373) and the requirements for busses according to ECE-R 118

